

We believe.



Annual Report  
2018-2019



“We are what we believe we are.”

C.S. LEWIS



“We aim to increase inclusion of clients in treatment planning, service design and goal-setting...”

MIKI JORDAN  
PRESIDENT AND CEO

# Q&A

## When did equity become a priority for Wayfinder Family Services?

The word “equity” wasn’t used as commonly in 1953 when Norm Kaplan founded the organization. But what Norm wanted was for children with visual impairments to have the same opportunities as sighted children. In a word, Norm wanted equity. As Wayfinder grew and expanded, we have maintained that focus on equity for those who are excluded or underserved.

## How will you promote equity, diversity and inclusion over the next three years?

One of the four goals in our strategic plan for 2019 to 2022 is “advancing equity.” We aim to increase inclusion of clients in treatment planning, service design and goal setting for Wayfinder. Also, we will ensure that staff from underrepresented groups have the opportunity to grow and become leaders, and that Wayfinder’s leadership reflects the communities we serve.

## What are your core beliefs?

As the CEO of Wayfinder, my guiding values and beliefs are embodied by the philosophy of servant leadership, which is rooted in humility, not authority. The growth and development of staff is one of my highest priorities. I want to empower those who work for me, unlock potential and creativity and align their sense of purpose with Wayfinder’s mission. A big piece of servant leadership is presence. Being there, listening and putting everything else aside so that you can be fully present for someone is the best gift that anyone can give to another person.

We believe in building an equitable world.



“An equitable world means we can all achieve success and happiness...”

ELWORTH (BRENT) WILLIAMS, JR.  
CHAIR OF THE BOARD OF DIRECTORS

## What does an equitable world look like?

I grew up in a developing country. Expectations for what is equitable there are different than for someone in the U.S. What is universal, however, is that each person has a desire to pursue happiness, unhindered by how they came into this world. An equitable world means we can all achieve success and happiness—but this is going to be different for each person. In a lot of ways, Wayfinder is helping children and families achieve greater equity relative to their circumstances.

## What are your core beliefs?

We are not all blessed with smarts or good looks, but you can control hard work. I always say to my kids, I don’t ask you to be the best, but work your hardest and do your very best. Of all the variables, you can control hard work. This is how I was raised. My parents didn’t come from much, and life was not easy in a developing country. My parents provided so that we all went to college, got degrees and good jobs. Through their hard work, they gave us everything we have.

Accountability goes hand-in-hand with hard work. Do what you say you are going to do and when you say you are going to do it. Dignity resonates with me, too. When I first came to Wayfinder’s Paralympic Games in 2012, it struck me that the games provide dignity, acceptance and participation to so many children with challenges. What Wayfinder does overall as an agency is to provide dignity and belonging.

# Believe



We believe in the power of early intervention.

**G**

ina was eagerly awaiting the arrival of her first foster child. After having two biological children, she and her partner were ready to adopt. “She was supposed to be a perfectly healthy 3-month old,” Gina remembers. “But when she arrived, she was only 6 weeks old.” And something was very wrong with baby Kennedy.

Kennedy slept nearly all day. “She didn’t cry for the first eight months,” Gina says. “When her eyes were open, she stared into a corner.” They discovered that the little girl had been exposed to methamphetamines in the womb.

## “She started seeing.”

An assessment revealed that Kennedy was legally blind and her development was severely delayed. The prognosis from doctors was so bad that Gina didn’t think early intervention could help Kennedy’s vision. “I thought, how are they going to teach a blind kid to see?” recalls Gina.

When Kennedy was 4 months old, Bertha Preciado started making home visits. Bertha is one of Wayfinder’s specialists who provide early intervention statewide to children with vision loss or multiple disabilities. Among other items, Bertha brought an iPad with a glowing red bunny. Week after week, Bertha would work with Kennedy to follow the slow-moving red bunny with her eyes.

“When I first met her, Kennedy was very nonresponsive to stimulation,” says Bertha. “If she wasn’t being touched, she was unaware of her surroundings.” To give Kennedy more sensory input, Bertha introduced sand and water. Kennedy loved it.

“It’s amazing how plastic babies’ brains are,” Gina says. “The improvement happened over months, but it was quick. She started seeing.” When Kennedy was 1 year old, “Bertha was using the same bunny, but it was bouncing all over the iPad, and Kennedy was following it,” says Gina.

With Bertha, Kennedy’s vision continued to improve, and she made rapid developmental progress. Now age 3 1/2, Kennedy is in a typical preschool and does not need special education services.

“Early intervention was totally life-changing for Kennedy,” Gina says. “I don’t know where she’d be now without Wayfinder. I didn’t know what to do for her. Thank you to Wayfinder from the bottom of my heart.”



# Believe



We believe in building resilience.

**H**

Heather has come a long way. The 7-year-old who threw things and hit walls during her tantrums is now an 18-year-old college freshman. Heather's resilience and intelligence were always inside her. But she needed someone to bring out the best in her.

That someone was Josefina, the foster mom in Wayfinder's Foster Care and Adoption program who gave Heather a home and changed the course of her life.

Until age 7, Heather was raised by her grandparents, who didn't know why Heather was angry or how to cope with her tantrums. "The pain was from being separated at a young age from my family," explains Heather. "The pain built up and I didn't know what to do." Overwhelmed, her grandparents put Heather in foster care.

Wayfinder placed Heather with Josefina and her husband, José. Josefina could tell that, despite her tantrums, Heather was a good girl.

For two years, the tantrums continued, "but Josefina and José knew what to do to calm me down," Heather recalls. "They would tell me to breathe." Little by little, Heather learned to control her anger and pain. She became an honor-roll student.

## "She's my daughter."

When Heather was 10, her biological father asked for her to live with him. "It was horrible," Heather recalls. "There was abuse and neglect. I felt like I was nothing to him." She told her therapist and asked to return to Josefina.

"I felt Josefina and José were my family," says Heather. "Even their family in Mexico treats me like I'm part of them."

Heather has fully embraced Josefina and José's culture. She speaks Spanish fluently and had a quinceañera, a celebration of the transition to womanhood at age 15. "She is a white girl with blue eyes and blonde hair," Josefina laughs, "But she's a really good Latina."

According to Sylvia, their Wayfinder social worker, "Josefina has educated Heather to believe in herself."

Now, Heather is pursuing a degree in respiratory therapy. Heather's resilience helped her overcome the heartache of losing her birth family. She continues to live with the loving family that welcomed her. About Heather, Josefina says simply, "She's my daughter."



# Believe



We believe every child deserves a loving family.

**A**nnie used to think that people were foster parents for the money. But when Annie's cousin became a foster parent and treated the children as her own, Annie was inspired.

"I saw so many kids needing extra help," Annie recalls. "I was in my home by myself, and I thought, how can I give back?" She contacted Wayfinder's Foster Care and Adoption program.

The first child that Annie fostered, 3-year-old Moriah, was a handful. Moriah's mother suffered from mental illness and neglected the girl. Moriah broke things and tore up Annie's house. "She couldn't speak very well," Annie says, "but she knew every curse word in the book." A doctor told Annie that Moriah was unteachable.

With support from Wayfinder, Annie developed her foster-parenting approach. "The kids have taught me to have patience," says Annie. "I give them love. I make myself trustworthy, so they know they can talk to me about anything."

After 18 months with Annie, Moriah lived briefly with her mother, who could not care for the girl. Annie welcomed Moriah back and became her legal guardian.

With Annie's support, Moriah began to overcome her anger. "I've had people tell me I should have sent Moriah back," Annie says. "My response is that, if that was my grandchild, I would not dispose of them because of a behavior issue."

Despite the doctor's opinion, Annie knew Moriah was intelligent. By second grade, Moriah had surpassed her classmates.

Wayfinder's Sylvia Gomez-Morales, social worker supervisor, notes, "Annie develops each child's strengths and gets them involved in something they enjoy."

Annie tried to interest Moriah in various sports and arts over the years. Then Annie signed Moriah up for track. Moriah began placing first and second in races. "All of a sudden, it's like a new Moriah," Annie says. "She has a purpose in life." Now in sixth grade, Moriah is also excelling in school.

"When I can see a difference in a child, I figure I have done what God has called me to do," says Annie. "It's something I love doing. The children keep me young."

## Fostering Love







We believe in maximizing potential.

“I

took a situation that could have devastated me and turned it into something good: family, independence, success,” says Riley, age 19. She spent three years in Wayfinder’s Transition Services, a life-skills program for young adults with vision loss. Riley was dealt a tough hand in life. But she has not just survived—she has flourished. And her intelligence and charisma shine through.

Riley lost her functional vision when she was shaken by her mother’s boyfriend at 8 months of age. “I can see people, my surroundings, color,” she describes. “I cannot read print. I can’t see inside windows.”

After a year in a foster home, Riley lived with her mother, who struggled with substance abuse. Riley’s maternal grandparents, a loving force in her life, gave her a home as her mother moved in and out of rehab.

When Riley was 12, her mother died and her grandparents’ health began to fail. She cycled through foster homes, group homes and psychiatric programs. “I spiraled out of control,” Riley recalls. “The more they tried to help me, the angrier I got.”

## “I’m a living example...”

In 2016, Riley found Wayfinder’s Transition Services. “That’s where I made my family,” she says. “I was able to be somebody that I couldn’t be at home or school.” Riley participated in the program’s weekend workshops, two residential summer programs, and summer internships.

“Living on my own in the dorm during the summer programs taught me I was capable of doing it,” Riley says. “Traveling in the community gave me mobility skills to cross California by myself. Seeing the success of visually impaired staff members gave me confidence.”

What would she say about Transition Services to someone in similar circumstances? “I would ask, ‘Are you signed up?’ ‘Cause if not, let me help you.’ I’d probably have a spare application in my purse,” she laughs.

Now, Riley is working to get a dog guide and plans to enroll in college to study child development. She says, “I’m a living example of what Transition Services does.”





## We believe in educational success.

The **EARLY INTERVENTION PROGRAM** in Southern California and **BLIND BABIES FOUNDATION** in Northern and Central California provide in-home early intervention services for children with vision loss and multiple disabilities, from birth to age 6. Young children maximize any vision they have and reduce developmental delays. The programs empower parents with knowledge and advocacy skills.

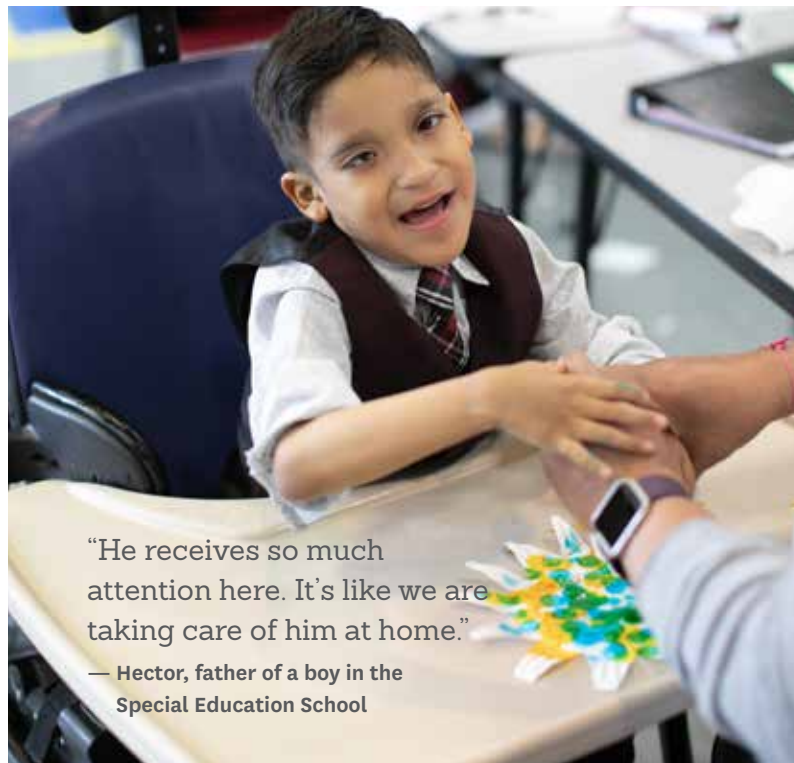
■ **Number:** 771 children

★ **Outcome:** 90% of children in Early Intervention and Blind Babies met their individual developmental goals.

Our **SPECIAL EDUCATION SCHOOL** offers children and youth ages 5 to 21 who are visually impaired or have multiple disabilities a safe, positive environment for growth. Students learn in the least restrictive environment in our state-certified, non-public school.

■ **Number:** 45 children

★ **Outcome:** 78% of students in our Special Education School met their individual goals in white-cane skills, independent living, braille and communication, and social and vocational skills.



"He receives so much attention here. It's like we are taking care of him at home."

— Hector, father of a boy in the Special Education School



"You are on a journey with the family. It is the most challenging experience of their life. You witness such strength in families, such love for their children, such devotion and dedication."

— Pam Chapin, program director of Wayfinder's Blind Babies Foundation

## We believe in economic opportunity.

The **DAVIDSON PROGRAM FOR INDEPENDENCE** in Los Angeles and **HATLEN CENTER** in San Pablo are comprehensive residential programs for adults ages 18 and older who are blind or visually impaired. Participants learn braille, assistive technology, orientation and mobility, and independent-living skills so they can find employment and enjoy productive, fulfilling lives.

■ **Number:** 78 adults

★ **Outcome:** 88% of graduates of Davidson and Hatlen increased their independence by achieving their goals in orientation and mobility, assistive technology and independent living skills.

**TRANSITION SERVICES** enable teenagers and young adults who are blind or visually impaired to explore careers and successfully transition to independent living, college or the workforce. Across California, young people learn assistive technology, independent-living skills, and orientation and mobility skills.

■ **Number:** 372 teens and young adults

★ **Outcome:** 100% of teens and young adults who participated for at least six months in Transition Services were in higher levels of training, employed or enrolled in higher education within six months of completing the program.

**ASSISTIVE TECHNOLOGY TRAINING** provides instruction to adults with vision loss on the latest assistive technology devices and software for success in today's job market. The program features our state-of-the-art technology lab and workspace assessments in Los Angeles, plus in-home training in Northern California.

■ **Number:** 36 adults

**EMPLOYMENT SERVICES** teaches adults who are blind or visually impaired the skills they need to get a job. Clients emerge as competitive candidates in the workforce. Also, Wayfinder assists employers in adapting workplaces.

■ **Number:** 53 adults

"I thought I would do a little cooking, a little cleaning, write a résumé. I didn't know I was going to get mobility training, workplace skills... and confidence."

— Riley, age 19, Transition Services participant

"The most rewarding moments are when you see students put things together for themselves. When they decide to go to college, move out or take a job."

— Robert Schulenburg, director of Transition Services





## We believe in health and well-being.

Wayfinder's **MEDICAL CENTER** provides 24-hour services to children with complex medical and mental health needs. Our staff includes eight full-time and four part-time nurses and a psychiatrist. We contract with a nurse practitioner, endocrinologist and behavioral psychologist. The medical center primarily serves children in our residential programs and the Special Education School. High-quality care helps exceptionally vulnerable children stabilize their medical and mental health conditions.

★ **Outcome:** Wayfinder's nursing staff administered an average of 273 doses of medication per day, or 99,645 per year.

**MENTAL HEALTH SERVICES** provides therapy to young people who have been impacted by the foster care system, including children with medical or behavioral needs, multiple disabilities or chronic illness. Also, we assist individuals and families who need help coping with the effects of sudden or gradual vision loss.

■ **Number:** 202 people

**CAMP BLOOMFIELD** provides children and youth who are blind, visually impaired, multi-disabled or in foster care and their families with memorable experiences that develop self-esteem and build independence. After the Woolsey Fire in November 2018 destroyed Camp Bloomfield, Wayfinder welcomed campers to the Point Fermin Outdoor Education Center in summer 2019 for a memorable camp experience.

■ **Number:** 830 children and adults

★ **Outcome:** 91% of campers with vision loss learned at least one new independent-living skill, such as making their bed.

Wayfinder offers **SPORTS AND RECREATION** that are adapted for child and teen athletes with disabilities. From goalball, a Paralympic team sport, to Visions: Adventures in Learning, we provide empowering recreational experiences.

■ **Number:** 723 children and youth

"Paralympics is a chance to show off my competitive side and to show other people that sports aren't just for the sighted."

— Evelyn, age 15, Wayfinder Paralympic athlete



"Camp Bloomfield makes them feel that they can do whatever they want to do."

— Martha, mother of a camper



## We believe in safety and security.

"Everyone has a grim view of what a shelter looks like. But Wayfinder's Cottage breaks the mold. The people set the tone, and the space matches that warmth."

— Marsha Todd Austen, founder of Hope in a Suitcase, which provides clothes and toiletries to children in The Cottage



"It's important to not give up on these foster children with special needs because they need the opportunities that you and I have."

— Regina, foster parent

In 2019, Wayfinder met rigorous requirements to convert its Youth Residential Treatment Program into a **SHORT-TERM RESIDENTIAL THERAPEUTIC PROGRAM** on our campus for foster youth with the highest medical and mental health needs. Youth receive intensive mental health and nursing services so they can overcome their challenges.

■ **Number:** 55 youth

★ **Outcome:** 90% of foster children in our STRTP gained knowledge and skills to manage their complex medical needs so they could transition to other levels of care in the community.

The **TEMPORARY SHELTER CARE PROGRAM**, also known as **THE COTTAGE**, is a 10-day shelter program on our campus for children, ages 0 through 17, who have been removed from their homes due to abuse, neglect or abandonment. They receive temporary refuge in a warm, therapeutic setting until they can be placed with family members or foster families. Wayfinder is one of only four agencies in Los Angeles County to provide this service and the only one that accepts infants and toddlers.

■ **Number:** 1,552 children

★ **Outcome:** 100% of children were emotionally safe and stable while in The Cottage.

Wayfinder's **FOSTER CARE AND ADOPTION** program matches children and youth who have been displaced from their homes due to abuse or neglect with families that can provide safe, caring homes. Our adoption services find loving, lifelong families for children in the child welfare system. Wayfinder is drawing on its decades of experience assisting children with disabilities to ensure that hard-to-place children with health and mental health conditions find homes.

■ **Number:** 461 children

★ **Outcome:** 75% of youth who were eligible to graduate from high school earned a diploma or equivalent.

Wayfinder operates five **GROUP HOMES** in single-family residences, each housing up to six children or six young adults with multiple disabilities. Residents receive round-the-clock care. All group homes are conveniently located near the Wayfinder campus so that residents can attend the Special Education School, use Wayfinder's recreational facilities or receive care from our 24-hour medical center in an emergency.

■ **Number:** 30 children and young adults

★ **Outcome:** 79% of residents of our group homes achieved two or more of their four individual goals for the year.





# Financial Data



Wayfinder is accredited by the Council on Accreditation. Achieving COA accreditation signifies that Wayfinder is among the best in the field, with exemplary programs, fiscal oversight, operations and management.

AS OF JUNE 30, 2019

## Statement of Financial Position

<b>ASSETS</b>	
Cash	\$ 448,431
Accounts and grants receivable	2,835,032
Pledges receivable	1,342,125
Other receivables	4,026,641
Prepaid expenses and other assets	2,294,083
Investments	27,930,209
Property held for investment	2,989,000
Property and equipment	10,774,120
<b>TOTAL ASSETS</b>	<b>52,639,641</b>
<b>LIABILITIES AND NET ASSETS</b>	
<i>Liabilities</i>	
Accounts payable	589,147
Accrued liabilities	3,974,341
Accrued unemployment liability	23,225
<b>Total Liabilities</b>	<b>4,586,713</b>
<i>Net Assets</i>	
Without donor restrictions	46,793,638
With purpose restrictions	839,410
With perpetual restrictions	419,880
<b>Total Net Assets</b>	<b>48,052,928</b>
<b>TOTAL LIABILITIES AND NET ASSETS</b>	<b>\$ 52,639,641</b>



We believe in transparency.

JULY 1, 2018 THROUGH JUNE 30, 2019

## Statement of Activities

<b>REVENUE</b>	
<i>Private Support</i>	
Wills and bequests	\$ 1,456,784
Other contributions	3,355,729
Trust income	1,366,378
Contributed property, good and services	446,703
<b>Subtotal</b>	<b>6,625,594</b>
<i>Government fees and other revenue</i>	
Government contracts, fees for service, grants	22,925,054
Other revenue	182,705
<b>Subtotal</b>	<b>23,107,759</b>
<i>Other</i>	
Investment income, net of fees	474,407
Gain on investments	896,847
<b>Subtotal</b>	<b>1,371,254</b>
<b>TOTAL REVENUE</b>	<b>31,104,607</b>
<b>EXPENSES</b>	
Program services	27,365,503
Management and administrative	3,721,393
Fundraising and public relations	1,409,416
<b>TOTAL EXPENSES</b>	<b>32,496,312</b>
<i>Change in Net Assets Before Other Changes</i>	<i>(1,391,705)*</i>
<i>Other Changes (Net)</i>	<i>1,869,193**</i>
<b>CHANGE IN NET ASSETS</b>	<b>477,488</b>
<b>NET ASSETS, END OF YEAR</b>	<b>\$ 48,052,928</b>

\*The -\$1.39 million change in net assets before other changes was due almost entirely to an unfunded state mandate that required Wayfinder to increase staffing and intensive services so that our Youth Residential Treatment Program could become licensed as a Short-Term Residential Therapeutic Program. During the transition, mandated by California's Continuum of Care Reform, the Department of Children and Family Services moved children with lower needs into other placements and slowly referred a new population of youth with the highest needs. This resulted in an extended period of low program enrollment that substantially decreased revenue.

\*\*Other Changes reflects insurance-claim income related to the destruction of Camp Bloomfield in the Woolsey fire, net of asset write-off.



CHARITY NAVIGATOR awarded Wayfinder four stars for the ninth consecutive year, signifying sound fiscal management and responsible stewardship of donations.



Wayfinder earned a Gold Seal of Transparency from GUIDESTAR, recognizing our commitment to transparency and fiscal responsibility.



Wayfinder is a BBB ACCREDITED CHARITY, meeting all 20 standards for accountability in governance, measuring effectiveness, finances and fundraising.



We believe in the impact of generosity.

# Our Benefactors

## \$1,000,000 and above

Anonymous

## \$200,000 – \$299,999

W. M. Keck Foundation  
The Rose Hills Foundation  
Weingart Foundation

## \$50,000 – \$99,999

The Derfner Foundation  
The Carl & Roberta Deutsch Foundation  
The Hearst Foundations  
The Ralph M. Parsons Foundation  
Stevie Wonder/We Are You Foundation

## \$25,000 – \$49,999

Jill Atterbury  
John and Marjorie Bancroft  
Fansler Foundation  
Jack Felthouse Scholarship Fund  
Donald G. Goodwin Family Foundation  
George Hoag Family Foundation  
The Karl Kirchgessner Foundation  
Thomas and Dorothy Leavey Foundation  
The Kenneth T. and Eileen L. Norris Foundation  
Santa Ynez Band of Chumash Indians  
Valley Jesters  
Wells Fargo Foundation  
Witherbee Foundation

## \$15,000 – \$24,999

Johnny Carson Foundation  
Comerica Bank  
Nadine and Harold Davidson  
Independent Financial Group  
The Ann Jackson Family Foundation  
Marcia Israel Foundation  
Max Factor Family Foundation  
Ann Peppers Foundation  
Annunziata Sanguinetti Foundation  
Kathryne H. Sewall Fund  
The Valley Foundation  
Brent Williams/City National Bank  
*And those who wish to remain anonymous*

## \$10,000 – \$14,999

Amir Atashi Rang  
Katherine Harvey Burr  
Vera R. Campbell  
Linda Myerson Dean  
Harvey Family Foundation  
Lisa and Robert Held  
Steve Hernández/DLA Piper LLP  
Intero Foundation  
Hana and Richard Kaplan  
Glenn and Janice McCoy  
Rite Aid Foundation  
George H. Sandy Foundation  
Andrea and Glenn Sonnenberg  
Albert Sweet and Craig Darian/Occidental Entertainment Group Holdings, Inc.  
Vistas for Children, Inc.  
Jeffrey P. Wilson  
*And those who wish to remain anonymous*

## \$5,000 – \$9,999

Marie and Jay Allen  
America's Best Local Charities Associated Roofing Contractors of the Bay Area Counties, Inc.  
Bolton & Company  
The Brotman Foundation of California  
The Bruce Ford Bundy and Anne Smith Bundy Foundation  
Constance W. Dunitz  
Elks of Los Angeles Foundation  
Employees Community Fund of Boeing California  
Scott and Carin Farkas and Family  
Fraternal Order of the Eagles, Unit #8  
Arthur J. Gallagher & Co.  
John & Marcia Goldman Foundation  
The Goodwin Family Memorial Trust  
Marian and Pink Happ Fund  
The William H. and Mattie Wattis Harris Foundation  
Linda and Michael Hong  
Miki Jordan and David Emenhiser  
Kelly Charitable Remainder Annuity Trust  
Kiwanis Club of Santa Monica  
Little Caesars Pizza  
Los Angeles Department of Water & Power Employees' Association  
Jeannette and Jonathan I. Macy  
Dena Marienthal  
Callie D. McGrath Foundation, Bank of America, N.A., Trustee  
Moose Toys  
Mutual of America  
Northrop Grumman Corporation  
Once Upon A Time Foundation

RBC Foundation  
Meta & George Rosenberg Foundation  
San Pablo Community Foundation  
Sence Foundation  
Reva Shakkottai  
Lucille Ellis Simon Foundation  
Lon V. Smith Foundation  
Bernard E. & Alba Witkin Charitable Foundation  
The Wood-Claeysens Foundation

## \$2,000 – \$4,999

Carole and Kenneth Adashek, M.D.  
Alpha Delta, Inc./Kitchen Account  
The Cecile & Fred Bartman Foundation  
Beverly Hills Charitable Foundation  
Paul Boyle  
Gail Buchalter and Warren Breslow  
Cabrillo Civic Club of Tulare County #12  
Judith A. Carroll and the David and Sylvia Weisz Family Foundation  
Central California Women's Conference  
Nilda Chong  
Arnold & Kay Clejan Charitable Foundation  
Chloe Crawford Fund  
Hazel E. Daly Fund  
The Hugh and Hazel Darling Foundation  
Ecolab  
Eye Surgical and Medical Associates  
Jean B. Fields Charitable Fund  
Ella Fitzgerald Charitable Fund

Georges & Germaine Fusenot Charity Foundation  
Pam and Don Gaines  
Gary Gorchester  
Rodger and Kate Graef Family Foundation  
The Herbst Foundation  
Huntington Culinary, Inc.  
Kaiser Permanente  
Lawrence Livermore National Security  
Los Angeles Host Lions Club  
Florence and Mike Madani  
Patti and Jim Maffei  
Bahador Mahboubi  
Sheila and Michael Marchese  
Nancy R. McCreery  
Eileen and Paul Meshekow  
The Dr. Henry & Lilian Nesburn Award Fund  
John Tue Nguyen  
Nissenson Family Fund  
Jennifer and Richard Porter  
Jane and Donald Royer  
Violet G. Sachs Endowment Fund  
Frances M. Shloss  
Marvin Silverman  
Grace Helen Spearman Charitable Foundation  
Variety Club Children's Charity  
Vision Produce Company  
Whittier Methodist Foundation  
George Randall Williams, M.D. and Sandra S. Arey  
R.W. Zant Company  
*And those who wish to remain anonymous*

## \$1,000 – \$1,999

9th Wonder  
Shane Aguilera  
Kathleen Anderson and Peter Jonas  
Glen Y. Arakawa  
Autodesk Foundation Employee Engagement Fund  
Bank of the Sierra  
Milton and Ruth Berman Family Foundation  
Beylik Drilling, Inc.  
Gordon Blumenfeld  
Dottie Bridge and Fernando Robleto  
Sudi Brusewitz  
California American Water  
Canterbury Consulting  
Jerry C. Carle  
Judy and Ching-I Chen  
Veronica and John Coelho  
Mike Cole  
Community Thrift Store  
Cynthia and Eldon Cotton  
Sam Crawford  
Doehring Foundation  
Elaine S. Elkin  
James and Sally Elmlinger  
Susan and Stewart Epstein  
EYE-Q Vision Care  
Myrna and Howard Fabrick  
Robert D. Fischer  
Carmen and Mario Garcia  
The Jacqueline Glass Family  
Susan and John Glass  
Linda and Robert Glassman  
Robert F. Green  
Gilbert E. Haakh

Donald J. Harrington  
Jeannette Herron  
Mr. and Mrs. Bob and BJ Holmes  
Inland Empire Lighthouse for the Blind, Inc.  
Innovative  
Teresa and Rick Jensen  
Rita L. Johnson  
Christine L. Johnston  
Rod and Lorraine Kiewiet  
Dinny and David Lesser  
Tonette and Jay Lincoln  
Lani and Mark Lipis  
Charlie & Teri Maier  
Blythe and Chris Maling  
The Robert, Mindy & Merissa Mann Foundation  
Mechanics Bank  
Robert Metoyer  
Michael and Lori Milken Family Foundation  
Joe H. Miller, Jr.  
Native Daughters of the Golden West Childrens Foundation  
Robert Nelson  
Ann and Michael Parker  
Dr. and Mrs. Gilbert S. Perlman  
Pleasant Valley Lions Club  
Rabobank  
Rebellia LLC  
Jackie and Robert Rosenberg  
Ruiz Foods  
Dr. Alan B. Scott  
Janice and David Smith  
Randy S. Sprabary and Tae H. Chi  
Katharine and Thomas Starbird  
Joyce and John Steen  
Brian J. Stock  
Tulare Host Lions Club

Raquel and Paul Vanni  
Barbara and Paul Villa  
Ruth E. Waugh  
Mr. and Mrs. Kenneth Weinman  
Lois and Doug Wilhelm  
Philip and Jessie Wojdak  
*And those who wish to remain anonymous*

## \$500 – \$999

Julie Andrews  
Kerem S. Bilge  
Alison Binder  
John Borrogan  
Susan and Fred Braddock  
Kit Bransby  
Camden Capital  
Nick and Kathy Canata  
Emmett B. Chambers  
Gary Cobrae  
Crimson Renewable Energy LLC  
Delta Gamma East Bay Alumnae Chapter  
Diablo Valley Delta Gamma Alumnae Chapter  
Hilton Edior and Family  
Dr. Arthur and Mrs. Melba Fields  
Forties Limited Car Club of Orange County  
Foster City Lions Club  
Fox Staffing Agency, Inc.  
Steven S. Freedberg  
Clare and Jack Friedman  
Barbara and Frank Fromer  
Herman & Margaret H. Gray Family Fund  
Tina Chou, MD and Steven Harrison, MD

# Believe

Wayfinder has made every effort to accurately list donors.  
If you notice an error, please call the Development Office at (323) 295-4555 ext. 220.



# Wayfinder Moments



- **THE PLACE:** Wayfinder Paralympic Games on Wayfinder's main campus in Los Angeles
- **THE PEOPLE:** Chandra Neal-Schutte and son Ryan Schutte
- **THE GREAT MOMENT:** Chandra's online campaign to support the Wayfinder Paralympic Games raised the most money of all family-led campaigns. "I'm inspired by the Wayfinder Paralympic Games," said Chandra, "and I love the opportunities it provides Ryan and other kids to enjoy sporting events that are adapted to their abilities."



- **THE PLACE:** Portraits of Hope studio in Los Angeles
- **THE PEOPLE:** Ten residents of Wayfinder's Davidson Program for Independence, which provides comprehensive rehabilitation services to adults who are blind or visually impaired
- **THE GREAT MOMENT:** Using specialized painting brushes and techniques, Davidson residents painted panels as part of a project sponsored by Portraits of Hope, a nonprofit arts organization. The colorful panels painted by residents were installed on the curved exterior wall and other areas of the Los Angeles Convention Center. "The event made me feel important," one Davidson resident said, "and it raised my self-esteem."

We believe in the impact of generosity.

Wayfinder has made every effort to accurately list donors.  
If you notice an error, please call the Development Office at (323) 295-4555 ext. 220.

## \$500 – \$999 (continued)

Sandy and Alvin Haveson  
Edward R. Helmer  
Stephen L. Herr, M.D.  
Karen and Emanuel Hirsch  
Thelma and Thomas Hotchkin  
Mayumi Matson and John Hughes  
Fay Jew  
Mr. and Mrs. Thomas Joy  
Katherine Kiehn  
Li and Theodore King  
Kiwanis Club of San Jose  
Kohl's  
Franceen P. Lederman  
Shari Leinwand  
Harry & Yvonne Lenart Charitable Foundation  
Julie and Jason Levine  
Lockheed Martin Employees' PAC  
Shirley Lutgen  
Yen Le and Jeff Mar  
Master Staffing, Inc.  
Linda and Kenneth Millman  
NAS Insurance Services, Inc.  
David E. Nelson  
Mike and Barbara Nicco  
Mariam and Jeremy Ochsenbein  
Susan Pickle  
Ms. Mara McGrath and Dr. George Pugh  
Roma Lodge #1573  
Rotary Club of Visalia  
David S. Sabih  
Santa Rosa Host Lions Club  
Mr. and Mrs. Robert Schaffer  
Steven J. Scher  
Hazel and George Shinsato  
Sandra and Hal Slan  
Diane Smith  
Anthony M. Stratton  
Shravan Sundaram  
Stanley Thimakis  
Visalia Breakfast Lions Club  
Marsela McGrane and William H. Vogel  
Cai K. Vong  
Marsha Vucovich  
Walnut Creek Host Lions Club  
Maureen and Robert Welch  
Mary A. Wertz  
*And those who wish to remain anonymous*

## Sustaining Partners

*Thank you to our sustaining partners, who support Wayfinder through monthly donations.*

Marie and Jay Allen  
Mr. and Mrs. Sohel M. Azhar  
Pauline A. Bahlmann  
Michael E. Barnes  
Bill Benner  
John Borrogon  
Anthony R. Castellano  
Emmett B. Chambers  
Curt Craton  
Michelle De Leon  
Nicolas Rommel Dizon  
James Dusek  
Dr. Arthur and Mrs. Melba Fields  
Adele Freulich  
Carmen and Mario Garcia  
Michael Giuliano  
Jessica and Brian Grifka  
Daniel Guggenheim  
Dell and Darryl Heikes  
Banh D. Hua  
Miki Jordan and David Emenhiser  
Dennis J. Kelly  
Katherine Kiehn  
Patti and Jim Maffei  
Josephine and Robert McCann  
Kenneth A. Meersand  
Tina Murray  
John Tue Nguyen  
Christine and Patrick Rhodes  
Toby B. Schoolman  
Gayle Schreiber  
Conrad Slemmer

Diane Smith  
Harry and Susan Snyder  
Joanie Steckel  
Joyce and John Steen  
Juanita L. Zinsmeister  
*And those who wish to remain anonymous*

## Planned Gifts

*We are grateful for the bequest and trust gifts received in full or in part this year.*

Estate of Janet R. Andersen  
Estate of Helen L. Anderson  
Selma Andrews Trust  
Elizabeth G. Bishop Trust  
Estate of Mabel E. Bradford  
Estate of Margaret and Robert W. Buttrey  
George and Faldina Celevich  
Joseph Cereghino Trust  
Estate of Carolyn and Carl De Dionisio  
Linda L. Edelman  
Dixie B. Eger  
Bruce H. Guess and Louise N. Guess through The Guess Trust  
Estate of Lila Hartman  
Lucille and Fred Hirsch Trust  
Donald King  
Estate of Pauline W. Ledeen  
Phyllis and Albert Londraville  
Arthur H. Lovejoy  
Elizabeth B. Lyons  
Roy D. McPhail Trust in memory of Franklin Lloyd McPhail  
The Michael Family Trust  
Lucy and Leonard G. Muskin

Oxy Long Beach, Inc.  
Leo L. Schaumer  
Estate of Lt. Col. Julius K. Schnapp  
Estate of Patricia M. Simpson  
Lillian C. Smith Trust  
Estate of Petal Turner

## Legacy Society

*Our sincere thanks to Legacy Society members, who have made provisions for Wayfinder in their estate plans or who have established a charitable gift annuity.*

Estate of Sandy Allen/Allen Family Trust  
Anne Baker  
John and Marjorie Bancroft  
Charles Bellone  
Mitzi Bennett  
Julie Bernas-Pierce  
Matilde V. Berne  
Irving and Jackie Blum on behalf of Otis Blum  
Sheila Bonito  
John Borrogon  
Estate of Mabel E. Bradford  
Angela L. Brown  
Estate of Margaret and Robert W. Buttrey  
Rhonda Fleming Carlson  
Sinart Chaijenkit  
Rutita Chaisakulchai  
Meiling Chang  
Peter S. Clark  
Le Roy Coutts  
Vernon Crowder

Felipe N. Cuevas  
Hector A. Curiel Sr.  
Zarui and Zeynal Darukyan  
Migdalia and Silvio Del Castillo  
West C. Delton  
Zenaida M. Deromo  
Jeannie L. Dimter  
Lin S. Dorfman  
Hung Duong  
Estate of Gwennie Edwards  
Sue and William Ehmig  
Elaine S. Elkin  
Sheila and Jeff Evron  
Gary M. Fisher  
Estate of Elaine H. Fleishman  
Don Fraley  
Adele Freulich  
The Gamore Family  
Estate of Katharine Gardner  
Estate of Elsie and Harold Gelber  
Estate of Abraham Goshgarian  
Robert F. Green  
Allan Gummerus  
Thelma and Heinz Hanau  
Laura M. Hardy  
Elizabeth and Steven Harris  
Estate of Charlotte Henning  
Luella B. Hill  
Wayne E. Hilton  
Harriett E. Hollingshead  
Mr. and Mrs. Bob and BJ Holmes  
Dr. Creig S. Hoyt  
Geraldine and Gordon Jakobsson  
Roberia W. Jones  
Miki Jordan and David Emenhiser  
Helen A. Kahawaii  
Carole and Michael Kamper, M.D.  
Tish and William Kartoian

# Believe



# Wayfinder Moments



- **THE PLACE:** Wayfinder's Special Education School
- **THE PEOPLE:** Daria, age 21, mom Larisa, and siblings Maxim and Anastasia
- **THE GREAT MOMENT:** After 10 years in Wayfinder's Special Education School, Daria, one of a set of triplets, graduated in spring 2019. While in school, Daria learned to effectively express her opinions, make choices and navigate Wayfinder's campus. Her graduation was a joyous day for her mom, Larisa, who attended with Daria's triplet siblings, Maxim and Anastasia.



- **THE PLACE:** U.S.S. Iowa Museum, Port of Los Angeles in San Pedro
- **THE PEOPLE:** Teenage campers from Wayfinder's Camp Bloomfield on a field trip as part of a science lesson
- **THE GREAT MOMENT:** In a science activity, campers worked in teams to build boats using only popsicle sticks, aluminum foil and duct tape. The boats floated with their cargos of coins!

We believe in the impact of generosity.

Wayfinder has made every effort to accurately list donors.  
If you notice an error, please call the Development Office at (323) 295-4555 ext. 220.

## Legacy Society (continued)

Samorntip and Khongsak Khosawad  
Estate of Adele S. and Eugene A. Klein  
Gertrude Klein  
Doris Knell  
Estate of Joseph Kvitky  
Palmer C. Langdon  
Elizabeth Lange  
Trinh Le Tse  
Estate of Pauline W. Ledeen  
Estate of Beatrice Leff  
Curtis Leseman \*  
Estate of Gertrude Levitt  
Bert O. Levy \*  
Charles F. Ligeti  
Ted and Georgia Lumpkin, Jr. \*  
Ludmila Manko and Fred Coleman  
Estate of Richard M. McAllister  
Theresa M. McAvinue  
Marilyn J. McDonnell  
Kenneth A. Meersand  
The Michael Family Trust  
Barbara Miller \*  
Miller Family Trust  
Raymond and Margaret Mion  
Susan and Victor Miranda  
Magda L. Mito  
Estate of Diane and Harold Mondschein  
Estate of Evelyn Moriarty  
Marilyn Murata  
Robert Myerson  
Irving J. Nast  
Dr. Jose and Freda Nessim  
Thomas Neville  
Yvonne and Donald Owens  
Beverly F. Padway  
Estate of Louis Palatt  
Estate of Sheryl G. Parker  
Estate of Morris Patton  
Bernard W. Pipkin  
Marcella and Henry Poitras  
Charles L. Polep  
Amorette L. Preston  
Madelyn and Arno S. Prinz  
Marie and Isaac Richman  
Joan A. Risse  
Fred Robbins  
Estate of Samuel N. Robinson  
Martha Rosales

Ruth and Robert Rosen  
Estate of P. Kathleen Roth  
Paula and Jason Russell  
Estate of Paul J. Schneider  
Toby B. Schoolman  
Susan A. Shapiro  
Frances T. Silberman  
Ruth H. Silverman  
Estate of Janice F. Smith  
Denise and Scott Smith  
Lydia Smith  
Kathleen Soper  
Estate of Hannelore L. Spielman  
Estate of Loraine M. Such  
Albert Taffoni  
Kirk G. Troy  
Eileen N. Ulrich  
Stephen Vaughan  
Felipe D. Vela  
Estate of Sanford B. Weiss  
Susan and David Wilstein  
Estate of Lenore L. Winter  
Susie C. Yale  
Andrew Zaltman  
Juanita L. Zinsmeister  
And those who wish to remain anonymous  
\*Charitable gift annuity

## In-Kind Support

Many thanks to our friends who made generous in-kind contributions this year.

Aurora World, Inc.  
Dottie Bridge and Fernando Robledo

Dawn Bridgewater  
California Yacht Club  
Chivaro Design  
Concerts West  
Concorde Career College  
Mr. and Mrs. Michael Cooper  
Delta Gamma at Loyola Marymount University  
Linda and Anthony Ellrod  
eSalon  
Ella Fitzgerald Charitable Foundation  
Foster All  
Robert Held and Matthew Held  
Hope in a Suitcase  
JAKKS Pacific, Inc.  
Miki Jordan and David Emehiser  
Kickee Pants, Inc.  
Knott's Berry Farm  
Robert E. Lieberman  
Los Angeles County, Office of Supervisor Mark Ridley-Thomas  
Glen Lukos  
Bahador Mahboubi  
Sophie P. Mastor  
Moose Toys  
My Stuff Bags Foundation  
Kathy and Don Ouimet  
Rosa M. Perez  
The Semaan Family  
Skinfood USA  
Andrea and Glenn Sonnenberg  
Tieks by Gavrieli  
Together We Rise  
Turelk, Inc.  
Jay Tyzzer



## Become a Wayfinder

Join us! Donate to Wayfinder Family Services and you will become a Wayfinder. You will be a part of all the inspiring Wayfinder Moments: infants with vision impairment learning to see... foster children finding loving homes... young adults who are blind gaining work skills and independence... Please consider making a gift today! Visit [www.wayfinderfamily.org](http://www.wayfinderfamily.org).

# Believe



We believe great people make  
our mission come alive.

## The Board of Directors

### CHAIR

Elworth (Brent) Williams, Jr.

### VICE CHAIR

Linda Myerson Dean

### SECRETARY

Scott M. Farkas, Esq.

### TREASURER

Glenn A. Sonnenberg

### MEMBERS

Edward W. Chambliss  
Harold A. Davidson, D.B.A.  
Timothy E. Ford, Esq.  
Robert D. Held  
Steve L. Hernández, Esq.  
Miki Jordan  
Richard L. Kaplan, C.P.A.  
Jonathan I. Macy, M.D.  
Reva Shakkottai, C.F.A.  
Stevie Wonder

## Executive Team

Miki Jordan

*President and  
Chief Executive Officer*

Jay Allen

*Executive Vice President and  
Chief Operating Officer*

Veronica Arteaga

*Chief Program Officer*

Carmen Garcia

*Chief People Officer*

Blythe Cotton Maling

*Senior Vice President and  
Chief Development Officer*

Donna Roberts

*Chief Financial and  
Administrative Officer*

Allison Burdett

*Executive Director of Visual  
Impairment and Developmental  
Disabilities Services*

Barry Feinberg

*Vice President of Program  
Development and Support*

Susan Wendell

*Vice President of Finance and  
Accounting*

## Office of Development

Blythe Cotton Maling

*Senior Vice President and  
Chief Development Officer*

Randy Sprabary

*Associate Vice President of  
Development*

Sara Breen

*Senior Director of  
Foundation Relations*

Claire Veroda

*Director of Communications*

Esther Clark

*Associate Director of  
Special Events and  
Volunteer Resources*

Jenna Fradkin

*Associate Director of  
Foundation Relations*

Karen Koh Thompson

*Associate Director of  
Development*

Kiara Herndon

*Development Associate*

**CREATIVE TEAM**  
Blythe Cotton Maling,  
Claire Veroda

**COPY**  
Sarah Hurst,  
Charitable Resources

**DESIGN**  
Beth Escott Newcomer,  
Escott Associates

**PHOTOGRAPHY**  
boonestudios.com,  
iStock, Claire Veroda,  
Emmalaine Berry,  
Julie Dozier, Gregory Wilson

**Wayfinder**  
FAMILY SERVICES





Wayfinder Family Services  
Main Campus  
5300 Angeles Vista Boulevard  
Los Angeles, CA 90043

Email: [info@wayfinderfamily.org](mailto:info@wayfinderfamily.org)  
Phone: (323) 295-4555

[www.wayfinderfamily.org](http://www.wayfinderfamily.org)







Wayfinder Family Services is providing additional information on our expenses broken down by program that you may find interesting. This reflects our commitment to transparency and to the children and families we serve.

## **PROGRAM SERVICES EXPENSES**

*For the year ended June 30, 2019*

Early Intervention Program	\$1,533,388
Blind Babies Foundation	978,830
Special Education School	2,222,880
Group Homes	4,768,220
Camp Bloomfield and Recreation	1,139,492
Transition Services	990,614
Davidson Program for Independence	1,442,790
Hatlen Center	746,715
Temporary Shelter Care (The Cottage)	3,714,848
Short-Term Residential Therapeutic Program	3,881,450
Foster Care and Adoption	3,842,347
Mental Health Services	1,545,186
Public Education Program	479,376
Strategic Initiatives	79,367

<b>TOTAL PROGRAM SERVICES</b>	<b>\$27,365,503</b>
-------------------------------	---------------------