



Child Development Services



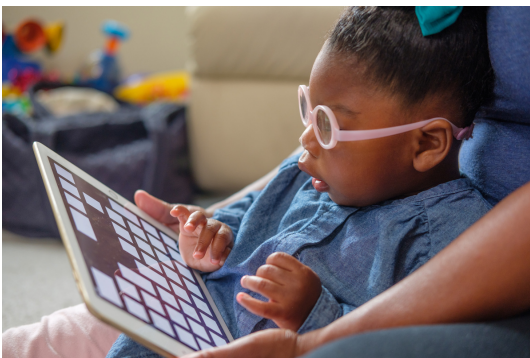
Family-centered services for young children who are blind, visually impaired or have multiple disabilities

Wayfinder Family's Child Development Services Program provides a wide range of services for children, birth to 3 years, with visual impairments and/or other disabilities in Northern, Central and Southern California. A key component of these services is helping families gain the knowledge to become successful advocates for their child's education and care.

AT A GLANCE

- Vision stimulation for children with visual impairments
- Infant stimulation for children with multiple disabilities
- Functional Vision Assessment, OREGON Assessment and/or DAYC-2 Assessment (as applicable)
- Parent education supporting parent/child relationships and family advocacy skills
- Opportunities for specialists to attend medical visits with families
- Family support groups, play dates, respite opportunities, family camp and other opportunities for families to meet and to learn from one another
- Coordination with family's additional service providers to provide support accordingly
- Bilingual services in English/Spanish in all regions
- Certified infant massage instructors
- Certified baby and yoga instructors
- Certified State Trainers of the VIISA2 and INSITE Models for Early Intervention for Infants and Toddlers with Vision Impairment and their Families
- Certified Specialists of VIISA2 and INSITE Models for Early Intervention for Infants and Toddlers with Vision Impairment and their Families.

Our early intervention services extend to the following Regional Centers: Central Valley, Golden Gate, Eastern Los Angeles, Harbor, Inland, Kern, Frank D. Lanterman, North Bay, North Los Angeles, East Bay, San Gabriel/Pomona, South Central Los Angeles, Tri-Counties and Westside.



REFERRAL PROCEDURE

Please direct all referrals to eireferrals@wayfinderfamily.org with:

- FACE sheet (required)
- POS or POS request (required)
- Any available assessments as applicable (optional).

All children are assigned to specialists within 24 hours of referral to Wayfinder Family Services. Families are contacted within 48 hours of referral to coordinate the first visit.

Vendor Code: 805

Vendor Number: H18795 (Southern)

Vendor Number: H18795 (North)

Vendor Number: HB0940 (Central)

Director: Faith Cardenas

fcardenas@wayfinderfamily.org

Scan below for general inquiries:



This institution is an equal opportunity provider.